

# Legend

Highways

Lakes

## Land Ownership

BLM Land

CDOW Land

STATE Land

USFS Land

## Property Classification

Vacant; 17,380 Acres

Residential; 25,362 Acres

Commercial; 2,091 Acres

Industrial; 55 Acres

Agricultural; 264,144 Acres

Natural Resources; 111 Acres

Exempt; 415,749 Acres

Currently Unclassified; 10,640 Acres

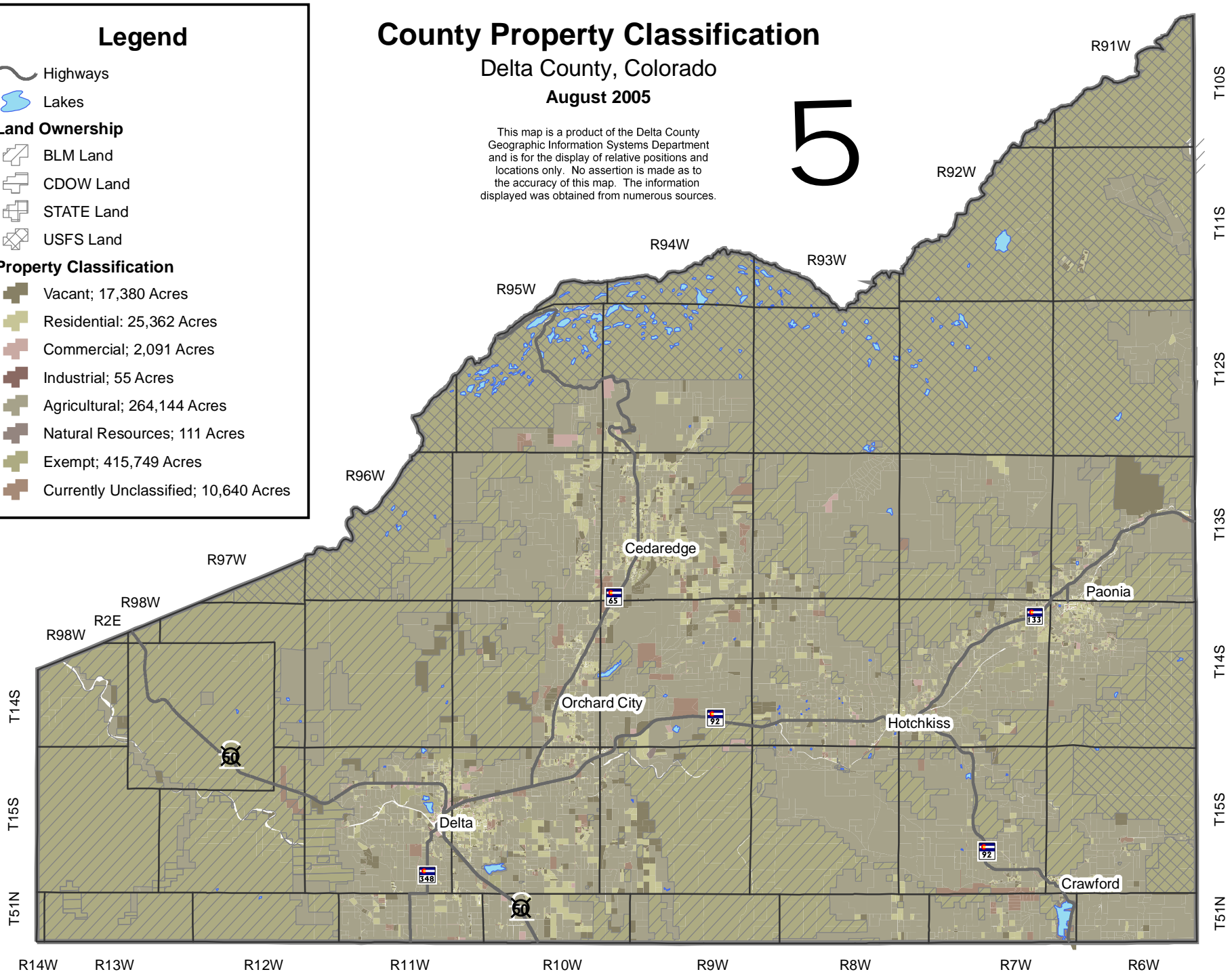
# County Property Classification

Delta County, Colorado

August 2005

5

This map is a product of the Delta County Geographic Information Systems Department and is for the display of relative positions and locations only. No assertion is made as to the accuracy of this map. The information displayed was obtained from numerous sources.



R14W R13W R12W R11W R10W R9W R8W R7W R6W

T14S T13S T12S T11S T10S

T15S

T51N